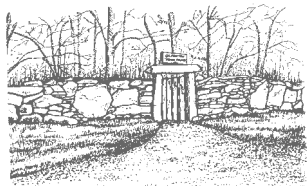


GHS Books, Publications and Gifts

The Society offers a variety of publications and gift items relating to the history of the Town. All are available for sale at the Town Clerk's Office (Academy), at our summer programs and at other Town events. Items may be ordered and shipped to you directly. See order form attached for details.

- *The History of Gilmanton* by Daniel Lancaster, covers the period from Gilmanton's incorporation in 1727 to the year 1845. Hardbound reprints are available for \$55.00.
- *The Dear Old Lake* Memories of Crystal Lake and the Village of Gilmanton Iron Works by Elizabeth Widger Arms and other "First Family" members. 170 pages with illustrations.
- *Gilmanton Summers* by Jane Cumming, records her recollections of summers in Gilmanton in the early 20th century. It is illustrated with photographs from the period.
- *Gilmanton, My Home Town* Memoirs of Louise Place Shurbert Illustrated with photos from the museum collection.
- *History of Gilmanton, NH to 1875* by William Badger, picks up where Lancaster left off. In addition to information on the industry and politics of the time, it includes information of genealogical interest.
- *Gilmanton Landmarks* A brief history, illustrated with pictures and drawings, of many sites and buildings in Gilmanton with "a story to tell." (pamphlet)
- *Town Historic Maps:*
 - 1860-1960 shows roads and residents for those years.
 - *Lancaster History, Plan of Gilmanton* showing original lots and ranges with development to 1845 superimposed.
- *The Tavern* A brief history of the historic Temperance Tavern in Gilmanton Corner. (pamphlet)
- *Smith Meeting House* was the first house of worship in Gilmanton. The complex remains an historic highlight. (pamphlet)
- *The Academy* The building, now housing the Town offices and meeting rooms, is the third on the site. (pamphlet)
- *Gilmanton Historic Photo Magnets* Historic scenes of the town adhered to flat magnets.
- *Historic Postcards* A selection of reproductions in full color of postcards issued prior to 1920.



Gilmanton Historical Society ~

The Gilmanton Historical Society was founded in 1967. Its purposes include preserving and exhibiting artifacts, letters and printed materials pertinent to the history of the Town; presenting programs for members and the public on historical subjects relating to Gilmanton and New Hampshire; and encouraging interest in the history and development of the Town.



The Society is a non-profit organization run by volunteers and funded by membership dues, donations, and proceeds from sales of books and other publications. Donations are exempt from federal taxation under §501(c)(3) of the internal revenue code.

The Summer Program Series, open to the public, is presented monthly, on the fourth Tuesday of each month, May through September. While there is no charge for the Society's programs, donations are welcome.

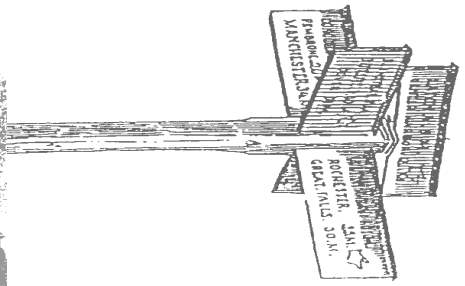


~ Gilmanton ~ Historical Society

Founded 1967



~ 2009 ~



~ Membership Opportunities ~

Yes, I/we want to become a GHS Member!

[Please check appropriate box(s) below.]

Name(s) _____

Address _____

Town _____

State/Zip _____

Phone (____) _____

Email _____

- | | | |
|------------------------------|-------------------------------------|----------|
| Annual
Membership
Dues | <input type="checkbox"/> Individual | \$ 10.00 |
| | <input type="checkbox"/> Family | \$ 15.00 |
| | <input type="checkbox"/> Benefactor | \$ 50.00 |
| | <input type="checkbox"/> Patron | \$100.00 |

Please make your checks payable to:
Gilmanton Historical Society

Donations and Dues may be mailed to the Society at:
P.O. Box 236, Gilmanton, NH 03237-0236

As a Society volunteer, I'd like to help with...

- Hospitality The Museum Publicity & Membership

GHS Order Form

I would like to order the following items.

(Please check the appropriate boxes below.)

- | | | |
|--|---------|-----|
| <input type="checkbox"/> Lancaster's History of Gilmanton | \$55.00 | |
| <input type="checkbox"/> The Dear Old Lake (Crystal Lake Memories) | \$20.00 | NEW |
| <input type="checkbox"/> Gilmanton Summers by Jane Cumming | \$15.00 | |
| <input type="checkbox"/> Gilmanton, My Home Town (Memoir) | \$12.00 | |
| <input type="checkbox"/> Badger's History of Gilmanton | \$10.00 | |
| <input type="checkbox"/> Gilmanton Landmarks | \$ 7.00 | |
| <input type="checkbox"/> Town Historic Maps (per map) | \$ 6.00 | |
| <input type="checkbox"/> The Tavern (Pamphlet) | \$ 5.00 | |
| <input type="checkbox"/> Smith Meeting House (Pamphlet) | \$ 5.00 | |
| <input type="checkbox"/> The Academy (Pamphlet) | \$ 5.00 | |
| <input type="checkbox"/> Historic Photo Magnets (per magnet) | \$ 2.00 | |
| <input type="checkbox"/> Historic Postcards (per card) | \$ 1.00 | |

Plus Postage\$_____

Total Enclosed.....\$_____

All these GHS items are available for purchase at the Town Clerk's Office in the Academy and at our Summer Program Series.

Please make your checks payable to:
Gilmanton Historical Society

Mail to: GHS, P.O. Box 236, Gilmanton, NH 03237-0236

~ 2009 Summer Program Series ~

(All programs take place on the Fourth Tuesday of the Month, May through September)

Every summer the Society hosts a summer series of programs that bring history to Gilmanton. The topics vary from individuals and groups who made a difference, to unusual books related to the region and its history. Each year the Society presents at least one program focusing especially on an aspect of the Town's history. The programs are open to the public at no charge. The Society welcomes donations to assist with costs of programs, maintenance of the Museum and the continuing work on aspects of Gilmanton history.

May 26th, 7:30 pm

Old Town Hall
Gilmanton Iron Works

*Yankee Humor & the
New England Story
Telling Tradition*

For more than ten years, Rebecca Rule has collected stories of New Hampshire, especially those that reflect what's special about this rocky old place. She'll tell some of them – her favorites are the funny ones – and invite audience members to contribute a few of their own.



June 23rd, 7:30 pm

Gilmanton Academy
Gilmanton Corners

*Dressing A
Colonial Lady*

Mary Spencer will dress, layer upon layer, in an authentic reproduction of a 1770s gown, complete with "stays," stomacher, petticoat and a "bumroll."



July 28th, 7:30 pm

Old Town Hall, Gilmanton Iron Works

Gilmanton History: 1900 to 1920

Pat Clarke has compiled another two decades of Gilmanton history drawn from newspaper reports of the time. Readings from the newspaper articles are illustrated with photos of the period.

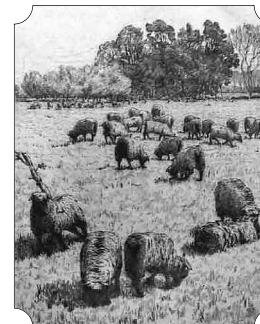


August 25th, 7:30 pm

Gilmanton Academy
Gilmanton Corners

*The Great New
Hampshire Sheep Boom*

Steve Taylor, former NH Commissioner of Agriculture, tells us how sheep raising in the mid 19th century changed the New Hampshire landscape.



September 22nd, 7:30 pm

Old Town Hall
Gilmanton Iron Works

*Before Peyton Place:
In search of the real
Grace Metalious*

Robert Perreault introduces us to the young Grace De Repentigny Metalious, revealing a side of the author that has remained largely unknown to the general public.



What the Society has to offer...

The Society's Museum

The Society maintains a Museum in the Academy Building at Gilmanton Corners. It is open to the public by appointment throughout the year. Contact the curators, Barbara Angevine/267-6132 or Marion McIntyre/267-6308, for information.

The Curators are also responsible for a revolving exhibit of artifacts, photographs and written materials appearing in display cases in the Academy Building near the Town Clerk and Selectmen's offices.

Donations of items, of specific historical interest to Gilmanton, are welcome.

Annual Memberships

Membership dues help support our programs and the expenses associated with maintenance of the Gilmanton Historical Society Museum. Dues and other monetary donations are recognized as tax deductible charitable gifts. Please see our membership form attached for details.

Officers & Directors 2009

President - John Dickey Vice President - Pat Clarke
Treasurer - Brenda Sens Secretary - Constance Widger

Directors

Barbara Angevine Carolyn Baldwin Carolyn Dickey
Paula Gilman Allen Everett George Kelley

Committees

Membership - Suzanne Everett Publicity - Carolyn Baldwin
Student Award - Brenda Sens Cemeteries - Marion McIntyre
Hospitality - Carolyn Dickey

Museum Curators

Barbara Angevine Marion McIntyre

www.historicalsocietiesnh.org/gilmanton

- Programs are FREE and OPEN TO THE PUBLIC. Donations are welcome. -
Social hour with refreshments begins at 7:00 pm. Programs begin promptly at 7:30 pm.